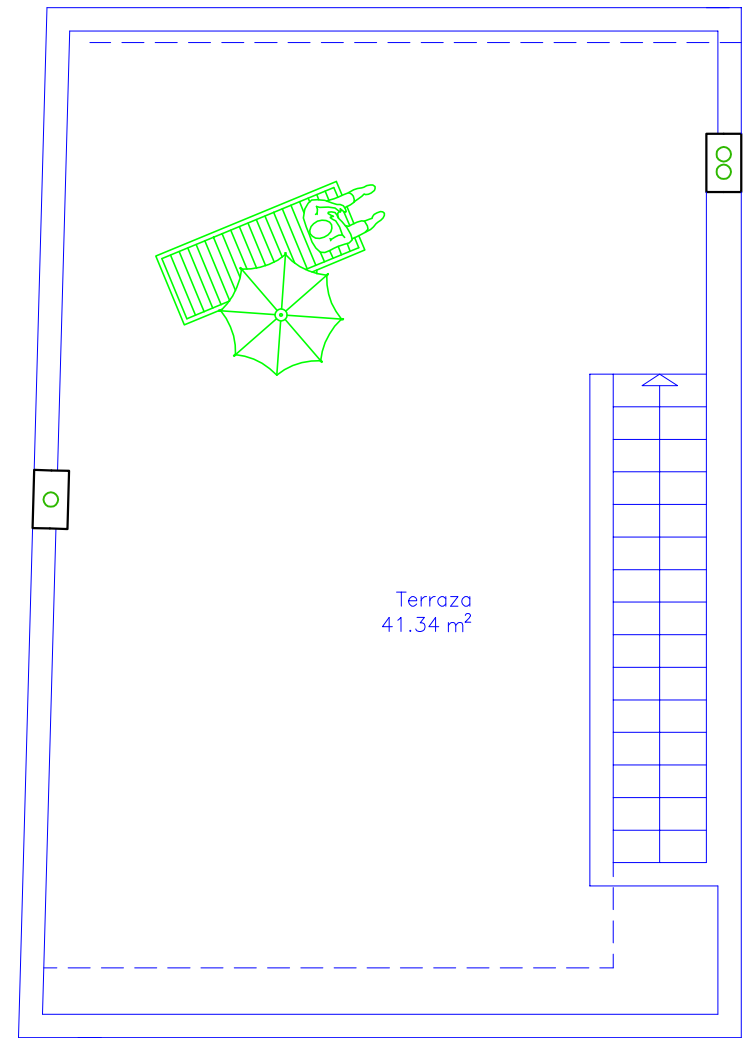
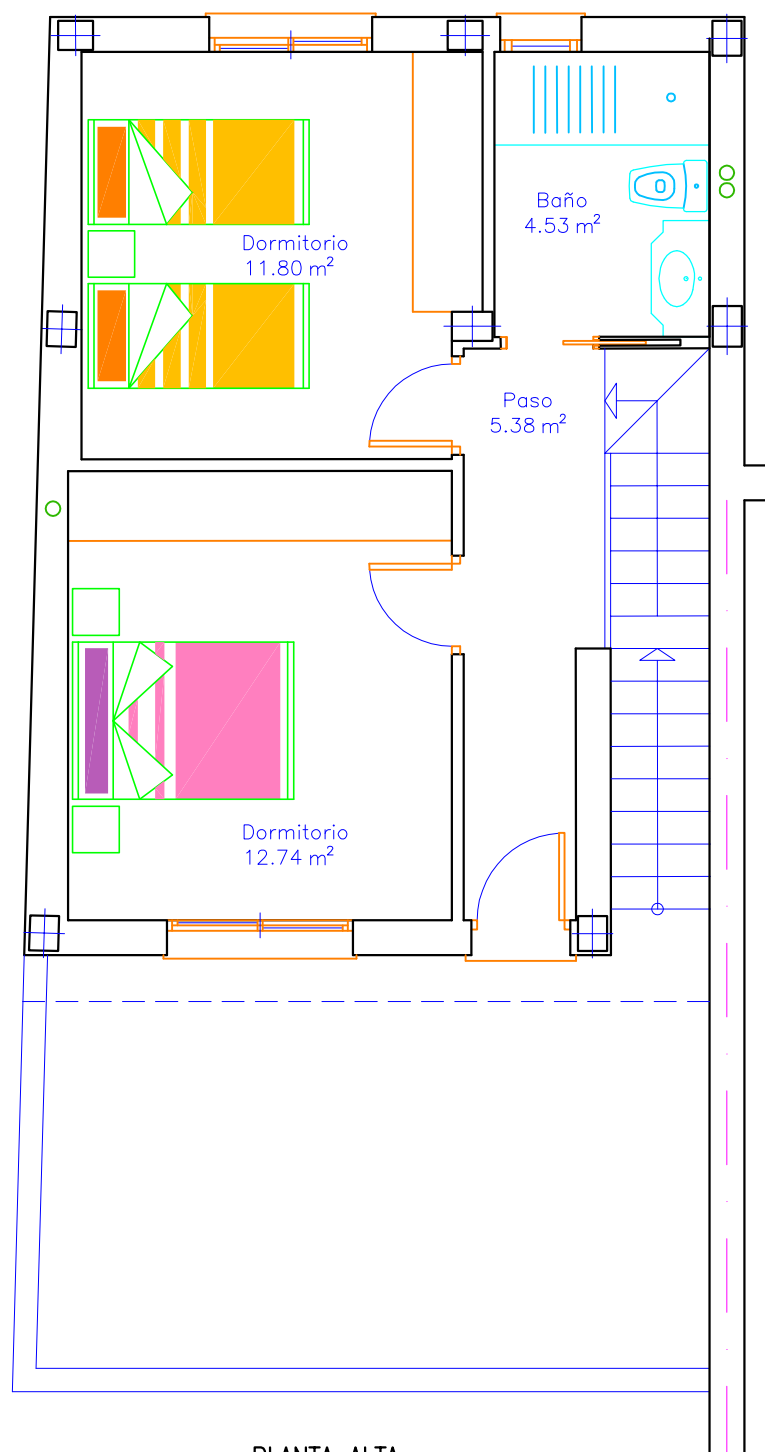


PLANTA BAJA  
S.C.= 68.19+2.91m<sup>2</sup>



CUBIERTA



PLANTA ALTA  
S.C.= 45.77m<sup>2</sup>

MOLINO II  
5 VIVIENDAS Y PISCINAS

VIVIENDA 1  
 SUP. PARCELA= 136.27m<sup>2</sup>  
 SUP. CONSTRUIDA= 116.87m<sup>2</sup>  
 SUP. TERRAZAS= 63.31m<sup>2</sup>  
 SUP. PISCINA= 11.25m<sup>2</sup>